



VARIABLE GEOMETRY DIFFUSERS

DGV SERIES

DGV Round diffuser with variable geometry
DGV-T Thermostatic round diffuser with variable geometry



DIFUSIÓN Y VENTILACIÓN



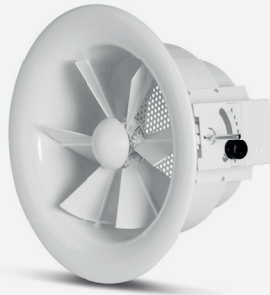
DGV



DGV-T

DGV SERIES DGV

**CIRCULAR DIFFUSER
WITH VARIABLE GEOMETRY**



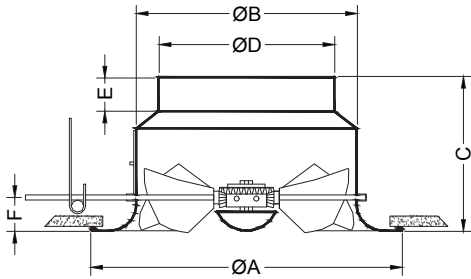
Model **DGV**. Circular diffuser of variable geometry with movable blades of simultaneous manual adjustment.
 Model **DGV-P**. Circular diffuser of variable geometry with movable blades of simultaneous manual adjustment. Square plate.

Allows for an opening from 0° to 90°.
 Made of aluminium with movable nylon blades.
 Provided with equalizer plate. Standard finish white lacquer RAL 9010.

Operation:

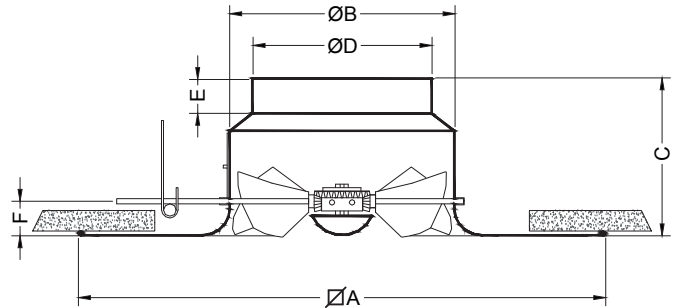
- (MA)** Manual
- (MS)** Built-in servomotor

DGV



	Ø D	Ø A	Ø B	C	E	F
DGV 200	198	350	248	180	40	50
DGV 250	248	400	298	205	40	55
DGV 315	313	500	398	230	40	65
DGV 400	398	615	465	270	60	65
DGV 500	498	780	565	320	60	85
DGV 630	628	935	665	390	80	125

DGV-P



	Ø D	Ø A	Ø B	C	E	F
DGV-P 200	198	596	248	180	40	50
DGV-P 250	248	596	298	205	40	55
DGV-P 315	313	596	398	230	40	65

DGV SERIES DGV-T

**CIRCULAR DIFFUSER
WITH THERMOSTATIC
VARIABLE GEOMETRY**



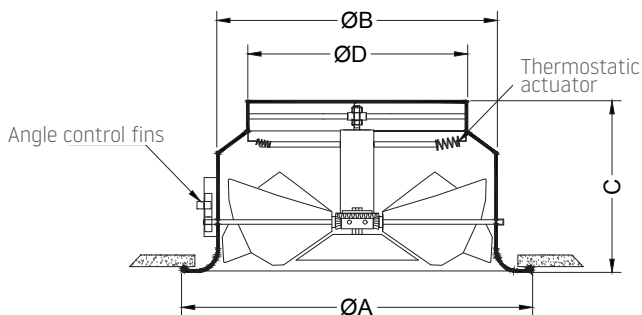
Model **DGV-T**. Variable geometry diffuser with thermostatic actuator.
 Model **DGV-TP**. Difusor de geometría variable con actuador termostático. Placa cuadrada.

Variable geometry diffuser with thermostatic actuator. Square plate.
 The DGV-T diffuser is characterised by the automatic regulation of its blades by means of a thermostatic actuator, due to the thermal memory effect of the Nickel-Titanium alloy. The regulation of the angle of deflection is very simple and intuitive by means of mechanical stops assisted by a colour scale. The colour of the graduated scale indicates the angle of the blades in the two conditioning positions (heating - cooling), red for the heating conditions and blue for the cooling conditions. When the supply air is hot (heating condition), the actuator will move the flow vertically. Conversely, when the supply air is cold (cooling condition), the actuator will move the flow horizontally, following the previously established angle of deflection.

The DGV-T diffuser does not need to be pre-adjusted prior to installation. Recommended installation height between 3.5 and 26 m. It can be installed in a duct, plenum or ceiling. The diffuser operates in a temperature range between 15 °C and 40 °C.

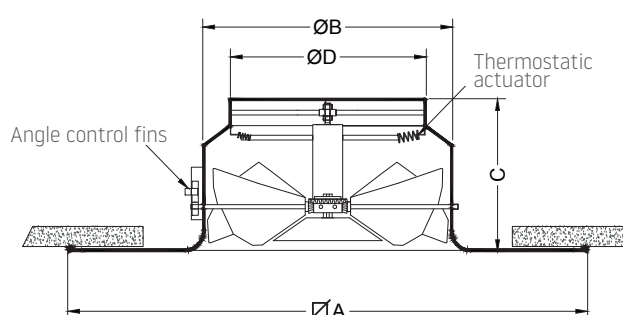
Made of aluminium with movable steel blades. Standard finish white lacquer RAL 9010.

DGV-T



	Ø D	Ø A	Ø B	C
DGV-T 200	198	350	248	180
DGV-T 250	248	400	298	205
DGV-T 315	313	500	398	230
DGV-T 400	398	615	465	270
DGV-T 500	498	780	565	320
DGV-T 630	628	935	665	390

DGV-TP



	Ø D	Ø A	Ø B	C
DGV-TP 200	198	596	248	180
DGV-TP 250	248	596	298	205
DGV-TP 315	313	596	398	230



SERIES DGV - DGV-T

SELECTION TABLE

Legend:

Q = Flow rate

Ak = Effective area of the diffuser neck in m²

Hm = Minimum - maximum recommended installation height in m.

B(min) = Minimum recommended distance between diffusers in m.

Vk = Effective velocity at diffuser face in m/s.

X = Reach in m. for final velocity 0,25 m/s

Pt = Pressure drop in Pa

LwA = Sound power level in dB(A)

DGV		200	250	315	400	500	630
Q (m ³ /h) (l/s)	Ak	0.0305	0.0479	0.0765	0.1238	0.194	0.3088
	Hm	2.5 - 3.8	3.0 - 5.3	3.3 - 6	4.3 - 7.5	5.5 - 16	7.5 - 26
300 83,3	B(min)	2.4	1.6				
	X	1.7	1.3				
	Vk	2.7	1.7				
	Pt	13	5				
	LwA	35	24				
400 111,1	B(min)	3	2.2	2			
	X	2.3	1.8	1.1			
	Vk	3.6	2.3	1.5			
	Pt	22	9	4			
	LwA	44	32	22			
500 138,9	B(min)	3.8	2.8	2			
	X	2.9	2.2	1.4			
	Vk	4.6	2.9	1.8			
	Pt	34	13	5			
	LwA	51	39	24			
600 166,7	B(min)		3.4	2.4	2.8		
	X		2.7	1.7	1		
	Vk		3.5	2.2	1.3		
	Pt		20	7	4		
	LwA		44	29	22		
800 222,2	B(min)			3	2.8		
	X			2.2	1.3		
	Vk			2.9	1.8		
	Pt			14	5		
	LwA			38	25		
1000 277,8	B(min)			3.8	2.8	3.4	
	X			2.8	1.7	2.2	
	Vk			3.6	2.2	1.4	
	Pt			22	9	4	
	LwA			45	32	22	
2000 555,6	B(min)				5.4	4	4.2
	X				3.4	4.6	3.5
	Vk				4.5	2.9	1.8
	Pt				34	13	5
	LwA				53	40	24
3000 833,3	B(min)					6	4.4
	X					7	5.5
	Vk					4.3	2.7
	Pt					31	13
	LwA					52	35
4000 1111,1	B(min)						5.8
	X						7.5
	Vk						3.6
	Pt						22
	LwA						44
5000 1388,9	B(min)						7.2
	X						9.6
	Vk						4.5
	Pt						34
	LwA						51

* Values for isothermal supply closure without coanda effect.

** Values with 45° angle of inclination of fins.

SERIES DGV - DGV-T

ORDER FORM

DESCRIPTION

Round diffuser with variable geometry, with simultaneously adjustable mobile blades, type DGV 200.
Manual operation.
White lacquer finish, RAL 9010.

Order form:

DGV

200

BL

Variable geometry diffusers series:

DGV
DGV-P

Operation:

(MA) Manual
(MS) Built-in servomotor



DESCRIPTION

Round diffuser with variable geometry, with thermostatic actuator, type DGV-T 200.
White lacquer finish, RAL 9010.

Order form:

1SC

LxH

LxH

Variable geometry diffusers series:

DGV-T
DGV-TP



SIMBOLOGY

TECHNICAL ICONS



SUPPLY



RETURN



SWIRL



MULTIDIRECTIONAL



LONG RANGE



ACCESSORIES



SQUARED



ROUND



LINEAR



FIX



ADJUSTABLE



CEILING



FALSE CEILING



WALL



FLOOR



TRANSIT



DUCT



OUTER/EXTERNAL



FIRE



DAMP



SMOKE





SAMOVENT TECHNIK®

T. 961 061 876

Acequia Mislata 12. 46200.
Paiporta. Valencia

www.samovent.com